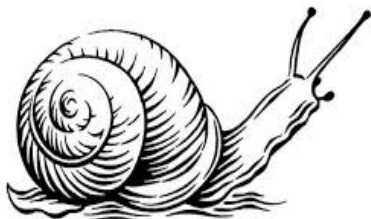
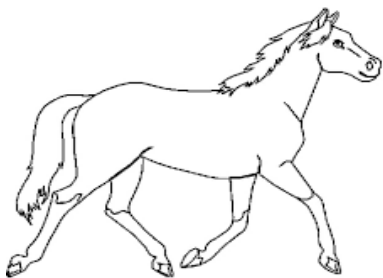
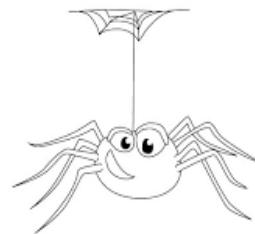


Phonologie: coder les syllabes d'un mot; localiser un phonème dans un mot

Pour chaque mot-image, trace autant de cercles que de syllabes orales puis colorie la syllabe dans laquelle tu entends le son [a]



A a a

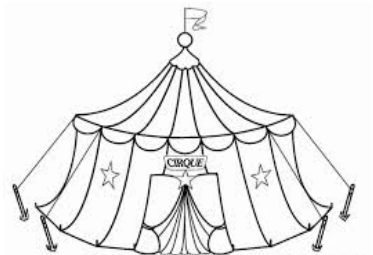
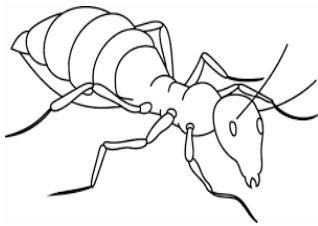
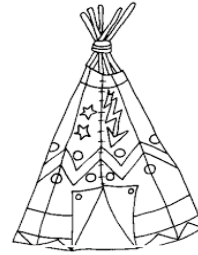
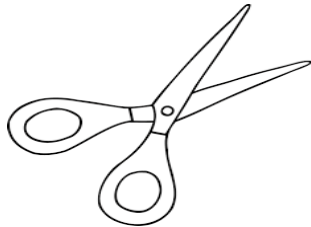
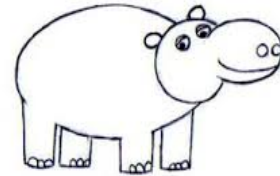
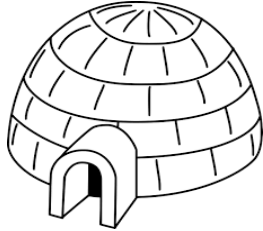


Phonologie: coder les syllabes d'un mot; localiser un phonème dans un mot

Pour chaque mot-image, trace autant de cercles que de syllabes orales puis colorie la syllabe dans laquelle tu entends le son [l]



lii



Sans dépasser